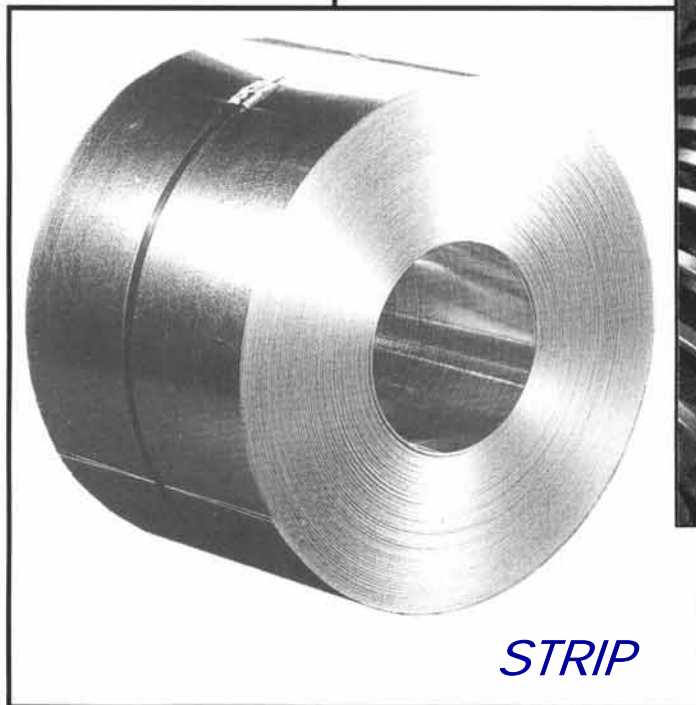
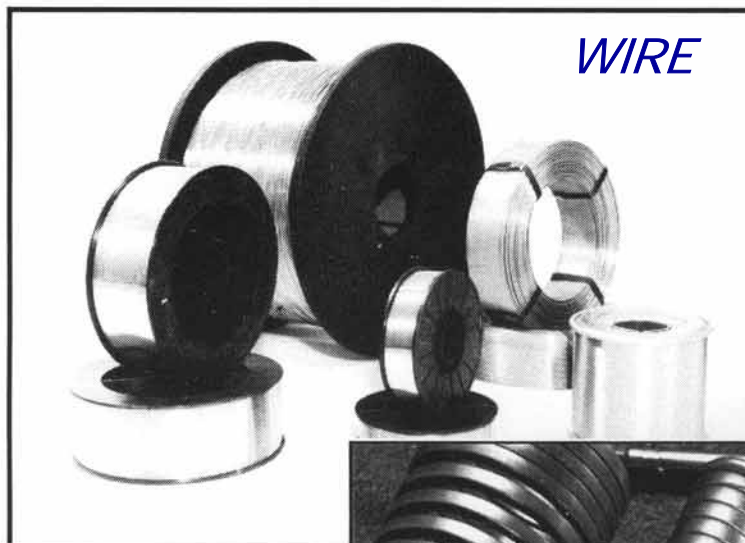
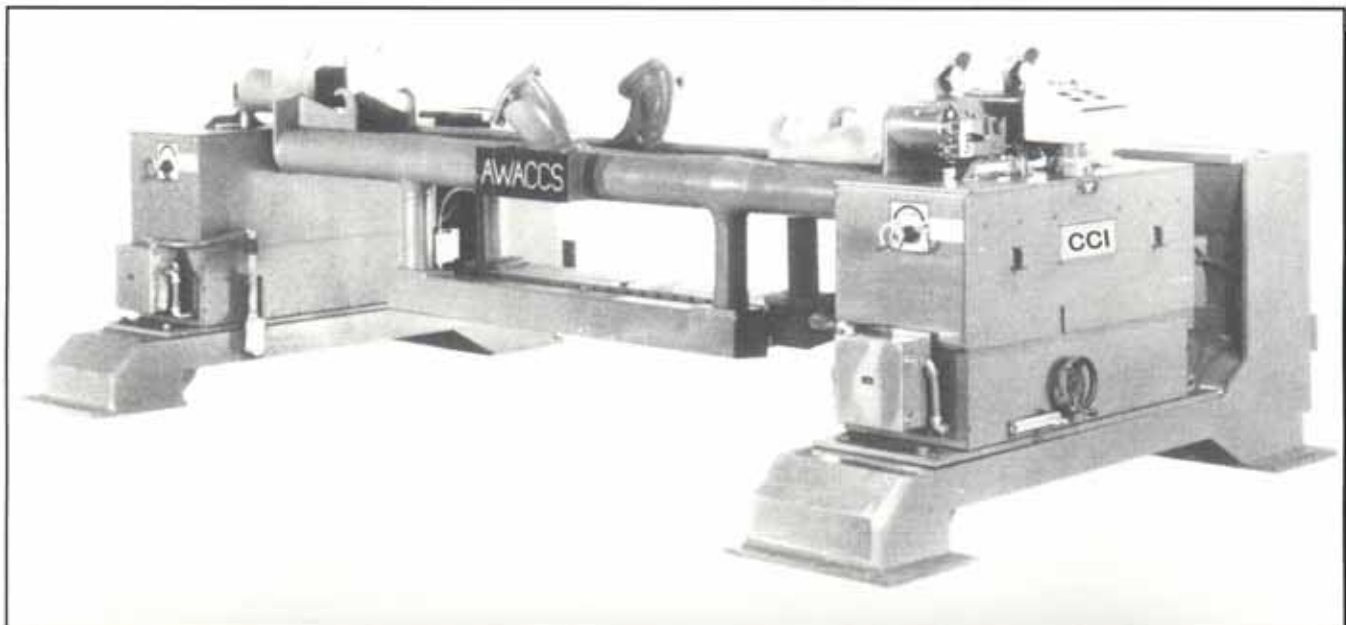


Coating Control, Inc.

Specialized Machinery for the Coating Process Industry

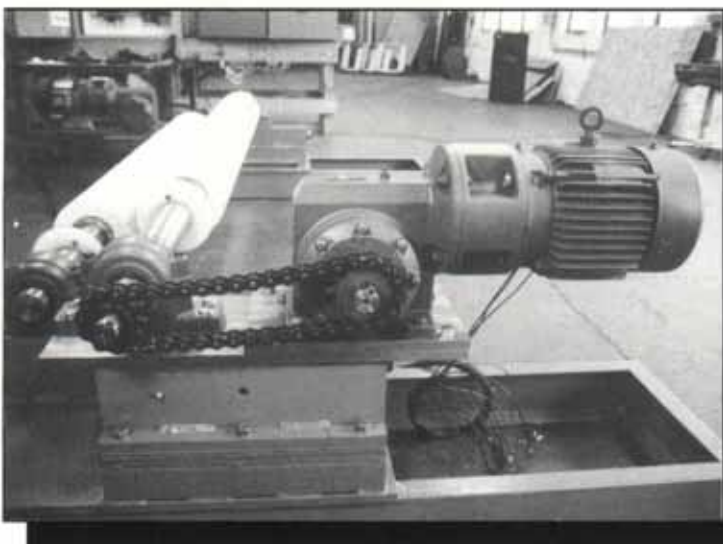


Continuous Processing Lines for Hot Dip Metal Coatings



COATING CONTROL EQUIPMENT

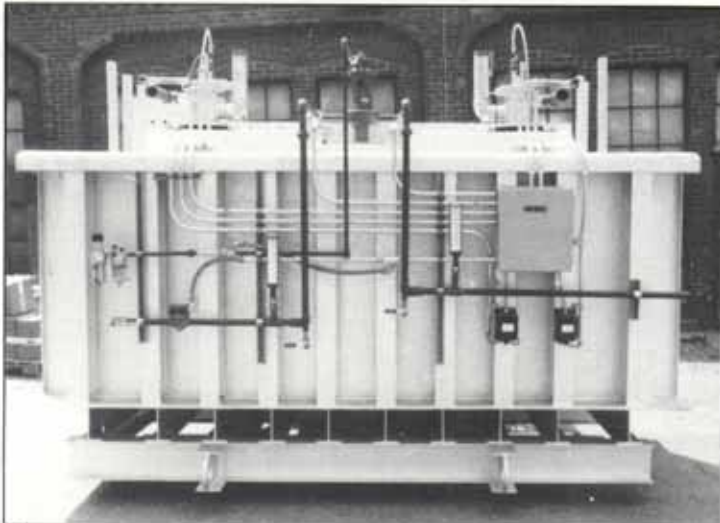
- MOTORIZED ELEVATOR POSITIONERS
- VARI-SLOT KNIFE
- LOCAL & REMOTE POSITION CONTROL
- STRIP STABILIZING EQUIPMENT



FLUX CONTROL SYSTEM

- COMBINATION BRUSH/
AIR WIPE
- REDUCE DROSS &
FUMING AT POT
- REDUCE FLUX
CONSUMPTION

STRIP

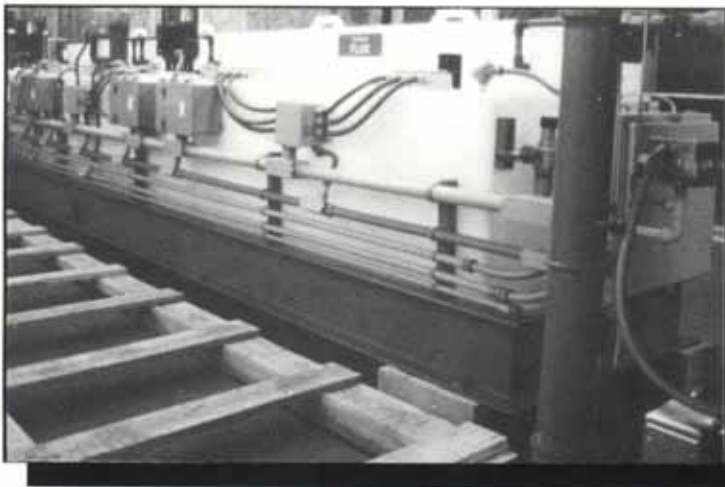


CERAMIC COATING POT

- GAS FIRED BURNERS
- LONG LIFE
- COMPLETE MACHINE
- MULTIPLE ALLOYS
- POT RIGS

OPERATOR CONTROLS

- ALL LINE CONTROLS
- FAULT MESSAGE DISPLAY
- SEPARATE MOTOR CONTROL PANEL
- NETWORK PLC COMMUNICATIONS



BEDPLATE ASSEMBLY

- EASY INSTALLATION
- SINGLE POINT UTILITIES CONNECTION
- CORROSION RESISTANT

TUBE / WIRE



COMPLETE DESIGN CAPABILITY / ASSEMBLY & TEST / TOTAL SYSTEM RESPONSIBILITY

OTHER AVAILABLE SERVICES

- START-UP & COMMISSIONING
- PROCESS CONTROL DESIGN
- ELECTRICAL PANEL DESIGN & ASSEMBLY
- EQUIPMENT FOR THE PLATING INDUSTRY

Coating Control, Inc.

825 Navarre RD SW Canton, OH 44707 USA
Tel: 330-453-9136 Fax: 330-453-6006
Website: www.coatingcontrol.com